

# ROTAMAT® Ro 3 Sludge Screen / Septage Receiving Station



- septage screening
- sludge screening
- optional grit chamber
- full automation & monitoring packages

## ►► Objectives

HUBER Technology provides complete systems and products for septic sludge treatment. Hundreds of ROTAMAT® septage receiving stations are successfully operating worldwide.

Septic sludge is typically delivered with tanker trucks to a wastewater treatment plant. Removal of debris, such as hygienic products and plastic material, is necessary. Objectives for septage receiving stations are:

- High capacity to minimize waiting times of tanker trucks
- Effective removal of non-degradable material
- Automation to avoid operator attention
- Totally enclosed to provide odor control
- Reliable operation, unimpaired by grit, gravel and grease
- Effective washing and compaction of screenings to permit landfilling and minimize weight and disposal costs

To meet these objectives we have developed a variety of systems. Their performance and reliability has been proven at hundreds of installations.

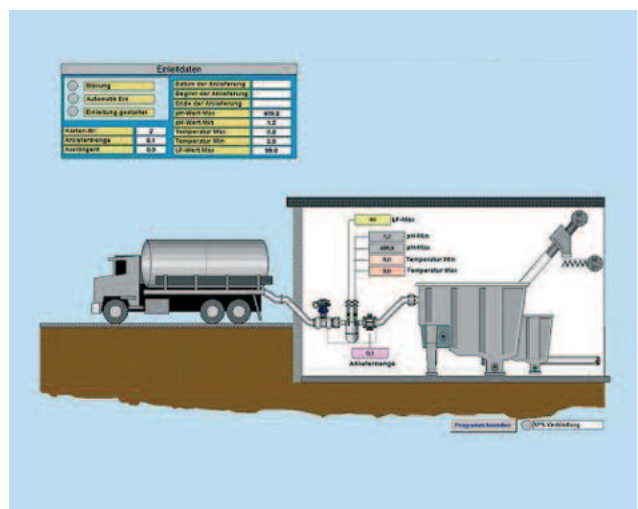


## ►► Identification, metering and data processing system

The Ro 3 can be provided with sophisticated hardware and software for full automation.

Our systems perform customer identification, metering, data recording and storage as well as invoicing. Septage receiving stations can be operated by customers without the need for operator attendance.

Sludge quality supervision (e.g. by pH measurement) and automatic sample taking can also be incorporated. Such systems either prevent disposal of harmful sludge or permit later proof of such incidents.



Data monitoring and processing system

## ▶▶ ROTAMAT® Ro 3 Sludge Receiving Station

We developed our ROTAMAT® Ro 3 Sludge Receiving Stations for mechanical pre-treatment of septic sludge as well as other sludges, such as contents from grease traps.

An inclined ROTAMAT® screen is installed in a tank. The delivered sludge is fed into the tank and, as it flows through the screen, debris and other coarse material are retained.

A rake and auger remove the screenings from the screen and pushes them up into and through an auger tube,

where the screenings are dewatered and compacted. This integrated screenings press reduces their volume and weight and drops them into a container or bagger.

The system is fully enclosed to provide odor control.

## ▶▶ ROTAMAT® Ro 3.1 Septage Receiving Station with Cylindrical Bar Screen

Our robust and efficient Ro 3.1 station is our most popular version. Its sturdy design guarantees dependable operation – day after day, year after year.

Its main component is our dependable ROTAMAT® Ro 1 Cylindrical Bar Screen. This screen excels through high capacity, good debris capture and low head loss. Its integrated screenings press and its optional integrated screenings washing system (IRGA) are further benefits.

Our ROTAMAT® Ro 1 Cylindrical Bar Screen is extremely sturdy and unimpaired by grease, grit and gravel. It is self-cleansing and its rake tines fully penetrate the gaps between the screen bars (Please find more information in our ROTAMAT® Ro 1 brochure).



*Outdoor installation of a ROTAMAT® Ro 3.1 Septage Receiving Station with frost protection*



*Debris and other coarse solids are retained in the screen basket; rake tines fully penetrate the slots between its bars thus guaranteeing positive cleansing*

## ▶▶ ROTAMAT® Ro 3.2 Sludge Receiving Station with Screw Screen

This low-cost Ro 3.2 version is useful for low flow and load applications. It is equipped with our inclined ROTAMAT® Ro 9 Screw Screen. Its semi-cylindrical screen basket is cleaned with a screw. The screw's flights are provided with a trailing wear-resistant brush.

The screw pushes the screenings up through an inclined auger tube, wherein they are dewatered and compacted.



## ➤ ROTAMAT® Ro 3.3 Sludge Receiving Station with Grit Trap and Grit Classifier

Our Ro 3.3 version is preferably used where received sludges contain stones and gravel that need to be removed. It consists of:

- A ROTAMAT® screen with integrated screenings press



ROTAMAT® Sludge Receiving Station with grit trap and grit classifying screw

- A grit trap and grit classifier

Because all components are integrated in a single tank this is a very compact unit with small footprint.



ROTAMAT® Ro 3.1 Septage Receiving Station at the plant entrance

## ➤ ROTAMAT® RoFAS Sludge Receiving Station with Wash Drum

Our RoFAS version is a workhorse and used for receiving difficult sludge. Its rotating wash drum has a huge capacity and is even unimpaired by rugs and textiles. As the material is conveyed through the slowly rotating perforated drum, sludge drains through its perforation and retained solids drop at its end into a wash-press WAP.



ROTAMAT® RoFAS Sludge Receiving Station

Our RoFAS system provides the following benefits:

- High hydraulic and solids capacity
- Sturdy design with minimum wear
- Great solids capture due to two-dimensional screening
- Excellent screenings washing and compaction



Up to 50 liters (13 gallons) of screenings per rotation

## HUBER TECHNOLOGY, Inc.

9735 NorthCross Center Court STE A · Huntersville, NC 28078  
Phone: (704) 949-1010 · Fax: (704) 949-1020  
huber@hhusa.net · <http://www.huber-technology.com>

Subject to technical modification  
0,0 / 2 – 10.2021 – 4.2011

ROTAMAT® Septage Receiving Station